

DeviceNet Media System

Bulletin Numbers 1485A, 1485C, 1485F, 1485G, 1485K, 1485P, 1485R, 1485T

Topic	Page
DeviceNet Flat Media System	2
DeviceNet Round Media	20
DeviceNet Auxiliary Power Round Media	35

KwikLink™ Lite Flat Media Cable Spools

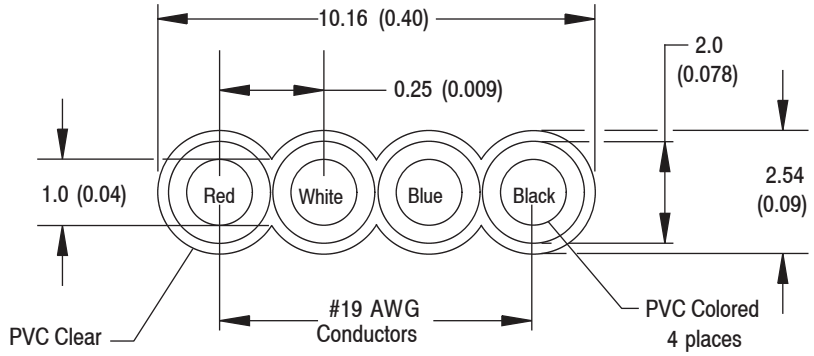


Specifications

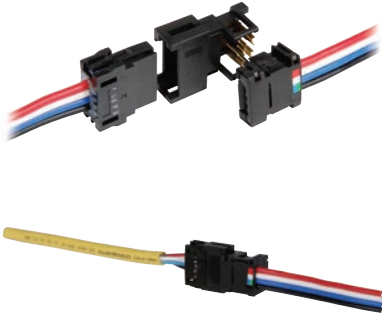
Certifications	UL and cUL Listed
Cable Type	4 conductor unshielded
Contact Material	Tinned annealed copper
Cable Rating	CL2 2c/AWG 19 and 2c/AWG 21 90°C, CL2 and CM Certified
Home Run Connection	26 mm (1.02 in.)
Operating Temperature [C (F)]	-10...+90 ° (14...194 °)

Approximate Dimensions

Dimensions are in millimeters (inches). Illustrations are not drawn to scale.



Trunk Line Connector, Drop-Line Connector, and Flat to Thin Round Converter IDC



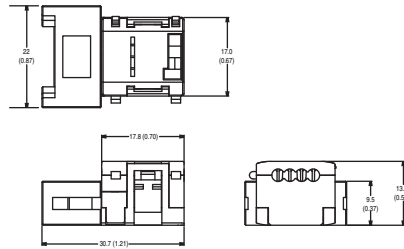
Specifications

Safety Ratings	
Certifications	UL Recognized
Physical Characteristics	
Connector Style	Housing:glass-fiber reinenforced PBT cover: PA66
Contact Material	Phosphor bronze/nickel substrate
Electrical	
Current Capacity	4 A
Voltage	30V DC
Environmental	
Enclosure Type Rating	IP20
Vibration	1.52 mm (0.06 in.) displacement, 10...500 Hz
Operating Temperature [C (F)]	-35...+55 ° (-31...+131 °)
Storage Temperature [C (F)]	-35...+80 ° (-31...+176 °)

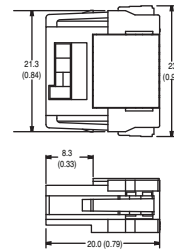
Approximate Dimensions

Dimensions are in millimeters (inches). Illustrations are not drawn to scale.

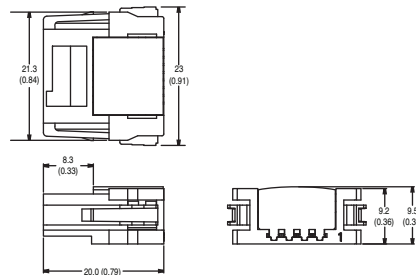
Trunk Line Connector



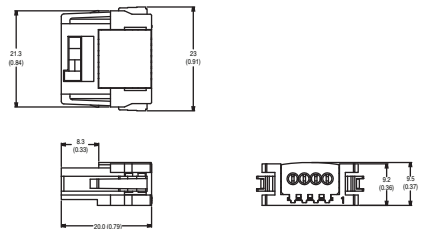
Drop Line Connector



Terminating Resistor

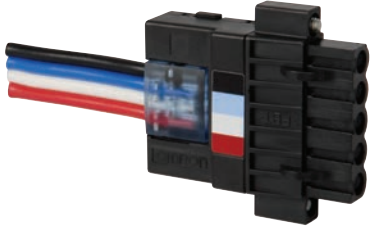


Flat Media to Round Converter



KwikLink™ Lite Flat Media

Five-Pin Open-Style Connector



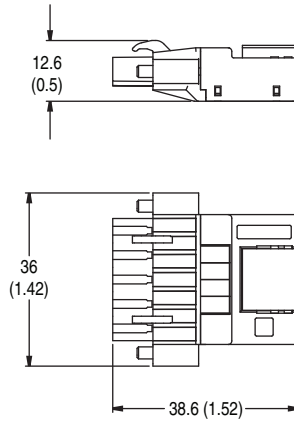
Open-Style Connector, IDC

Specifications

Safety Ratings	
Certifications	UL Recognized
Physical Characteristics	
Connector Style	Housing: PBT -V0
Contact Material	Gold-plated
Electrical	
Current Capacity	4 A
Voltage	25V DC
Environmental	
Enclosure Type Rating	IP20
Vibration	0.75 mm (0.03 in.), 10...500 Hz
Operating Temperature [C (F)]	-40...+100 ° (-40...+212 °)
Storage Temperature [C (F)]	-40...+100 ° (-40...+212 °)

Approximate Dimensions

Dimensions are in millimeters (inches). Illustrations are not drawn to scale.





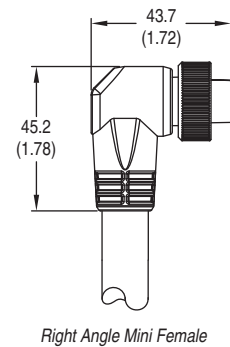
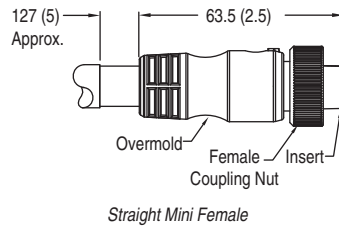
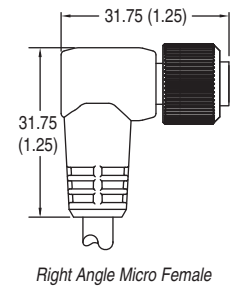
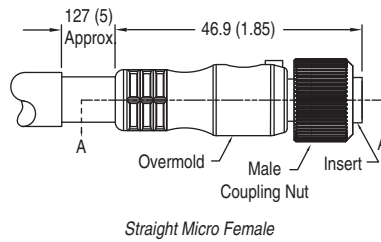
KwikLink Lite Drop Cordset

Specifications

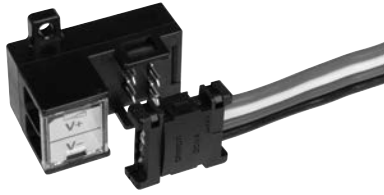
Physical Characteristics	
Coupling Nut Material	Epoxy-coated zinc
Connector Material	Molded oil-resistant PUR
Contact Material	Gold-plated palladium nickel
Cable Type	Oil resistant grey PVC jacket, unshielded, 22 AWG power conductors, 24 AWG signal conductors
Cable Diameter [mm (in.)]	6 (0.24)
Electrical	
Current Capacity	4 A
Environmental	
Temperature Rating [C (F)]	-20...+80 ° (-4...+176 °)

Approximate Dimensions

Dimensions are in millimeters (inches). Illustrations are not drawn to scale.



KwikLink™ Lite Flat Media Terminal Block IDC



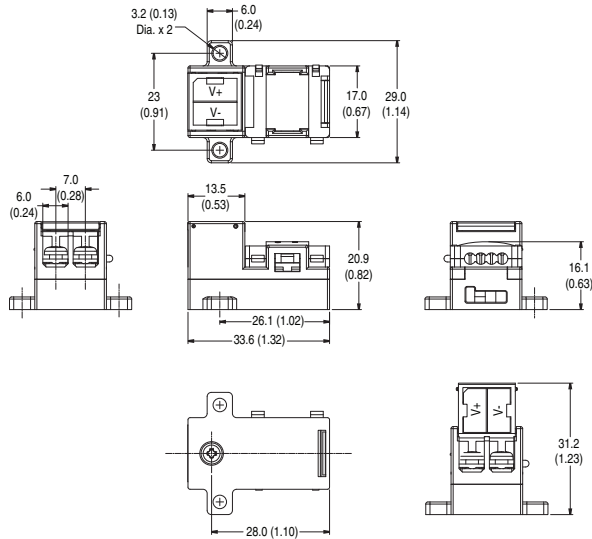
Power Input

Specifications

Safety Ratings	
Certifications	UL Recognized
Physical Characteristics	
Connector Style	Contact area: phosphor bronze/nickel under plated, gold plated; Terminal area: phosphor bronze/nickel under plated, gold flash plating
Contact Material	Phosphor bronze/nickel substrate
Electrical	
Current Capacity	4 A
Voltage	30V DC
Environmental	
Enclosure Type Rating	IP20
Vibration	1.52 mm (0.06 in.) displacement, 10...500 Hz
Operating Temperature [C (F)]	-35...+55 ° (-31...+131 °)
Storage Temperature [C (F)]	-35...+80 ° (-31...+176 °)

Approximate Dimensions

Dimensions are in millimeters (inches). Illustrations are not drawn to scale.





Class 1 Flat Cable



Class 2 Flat Cable



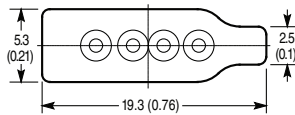
Auxiliary Power Flat Cable

Specifications

Certifications	UL Listed and CSA Certified
Cable Type	4-conductor unshielded
Cable Rating	CL1: 4C16, UL TC 600V 75C wet sunlight resistant, cUL FT4 CL2: 4C16, UL CL2 75C, CSA AWM I/II A/B 80C 300V FT4 Auxiliary Power: 4C16, UL TC 600V 75C wet sunlight resistant, cUL Type CIC TPE FT4
Operating Temperature [C (F)]	-25...+75 ° (-13...+167 °)

Approximate Dimensions

Dimensions are in millimeters (inches). Illustrations are not drawn to scale.



KwikLink™ General Purpose Flat Media Connectors



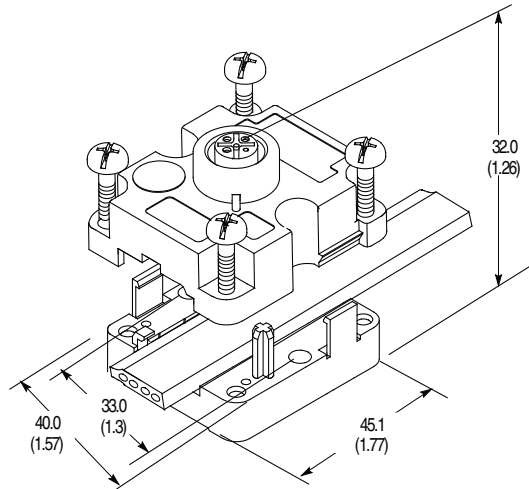
KwikLink General Purpose

Specifications

Storage Temperature [C (F)]	-40...+85 ° (-40...+185 °)
Installation Temperature [C (F)]	0...50 ° (32...122 °)
Operating Temperature [C (F)]	-25...+75 ° (-13...+167 °)
Enclosure Type Rating	IP67
Vibration	0.35 mm (0.014 in.) displacement @ 10...150Hz, 3 planes
Connector Material	Cover: Glass-filled polyester, type PBT Base: Glass-filled nylon, type PA66
Installation Torque	1.1...1.3 N·m (10...12 in·lb)
Dimensions	45 x 40 x 32 mm (1.8 x 1.6 x 1.3 in.)

Approximate Dimensions

Dimensions are in millimeters (inches). Illustrations are not drawn to scale.





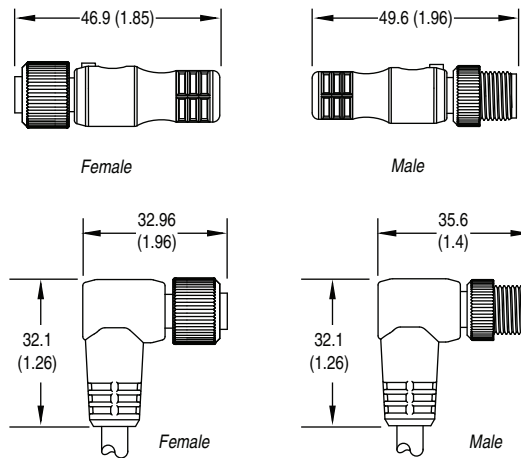
KwikLink Drop Cable

Specifications

Coupling Nut Material	Epoxy-coated zinc
Connector Material	Molded oil-resistant PUR
Contact Material	Gold over nickel-plated brass
Cable Type	Oil-resistant grey PVC jacket, unshielded, 22 AWG power conductors, 24 AWG signal conductors
Cable O.D.	6 mm (0.24 in.)
Temperature Rating [C (F)]	-20...+80 ° (-4...176 °)
Current, Max	3 A

Approximate Dimensions

Dimensions are in millimeters (inches). Illustrations are not drawn to scale.



KwikLink™ General Purpose Flat Media

Micro Auxiliary Power Cordsets & Patchcords



4-Pin DC Micro Patchcord

Specifications

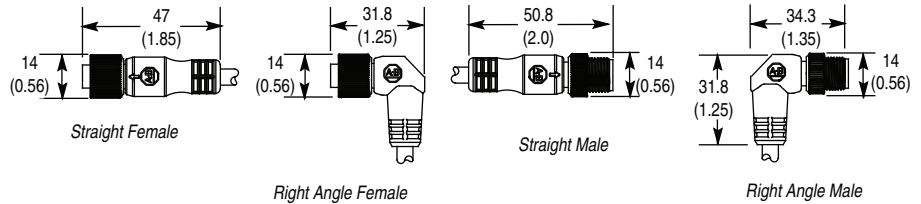
Certifications	UL Recognized and CSA Certified
Mechanical	
Coupling Nut Material	Epoxy-coated zinc
Connector Material	Molded PUR
Contact Material	Gold over nickel-plated brass
Cable Type	Oil-resistant PVC jacket, PVC insulated conductors, 300V
Cable Diameter [mm (in.)]	5 (0.21)
Bend Radius	10 x diameter
Electrical	
Cable Rating	UL AWM style 2661 VW-1 105C 300V, CSA AWM A/B I/II 80C 300V FT1, UV oil and water resistant
Assembly Rating	250V, 4 A
Environmental	
Enclosure Type Rating	IP67, NEMA 6P, 1200 psi (8270 kPa) washdown
Temperature Rating [C (F)]	-20...+105 ° (-4...+221 °)

Wiring Diagrams

Male	Female
1 <---No connection---	1
2 <-----Brown----->	2
3 <-----Blue----->	3
4 <---No connection---	4
5 <---No connection---	5

Approximate Dimensions

Dimensions are in millimeters (inches). Illustrations are not drawn to scale.





Class 1 Flat Cable



Class 2 Flat Cable



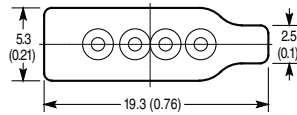
Auxiliary Power Flat Cable

Specifications

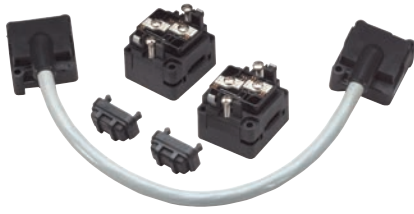
Certifications	UL Listed and CSA Certified
Cable Type	4-conductor unshielded
Cable Rating	CL1: 4C16, UL TC 600V 75C wet sunlight resistant, cUL FT4 CL2: 4C16, UL CL2 75C, CSA AWM I/II A/B 80C 300V FT4 Auxiliary Power: 4C16, UL TC 600V 75C wet sunlight resistant, cUL Type CIC TPE FT4
Operating Temperature [C (F)]	-25...+75 ° (-13...+167 °)

Approximate Dimensions

Dimensions are in millimeters (inches). Illustrations are not drawn to scale.



KwikLink™ Heavy Duty Flat Media Trunk Splice Kit



Splice Kit

Specifications

Storage Temperature [C (F)]	-40...+85 ° (-40...+185 °)
Operating Temperature [C (F)]	-25...+75 ° (-13...+167 °)
Enclosure Type Rating	Unsealed: NEMA 1; IP60 (IEC 529)
Vibration	1.5 mm displacement @ 10 500 Hz, 10 G peak, 3 planes
Material	Valox®
Jacket Material	Grey PVC
Dimensions	45 x 49 x 59 mm (1.8 x 1.8 x 2.3 in.)

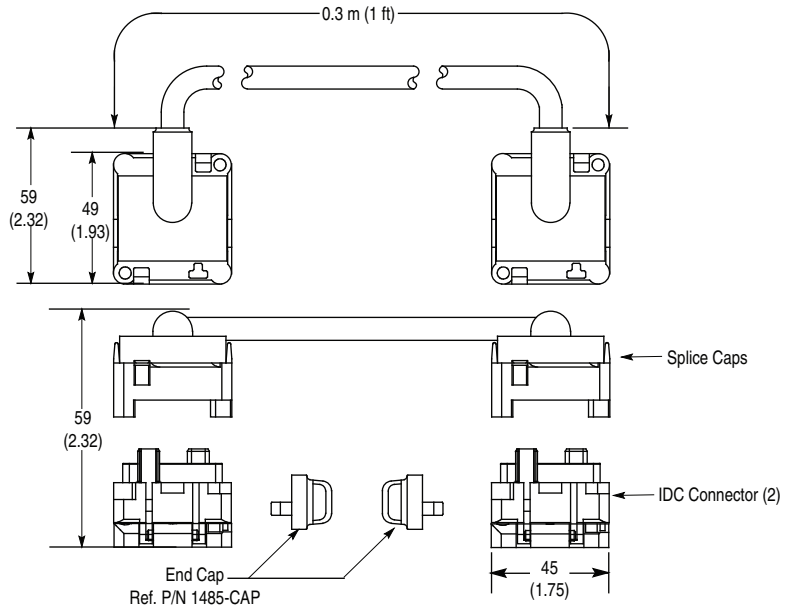
Wiring Diagrams

V+ (Red) V+
 Can-H (White) Can-H
 Can-L (Blue) Can-L
 V- (Black) V-

V+ (No Connection) V+
 Can-H (White) Can-H
 Can-L (Blue) Can-L
 V- (Black) V-

Approximate Dimensions

Dimensions are in millimeters (inches). Illustrations are not drawn to scale.



KwikLink™ Heavy Duty Flat Media Insulation Displacement Connectors



Micro Style IDC



Open Style IDC



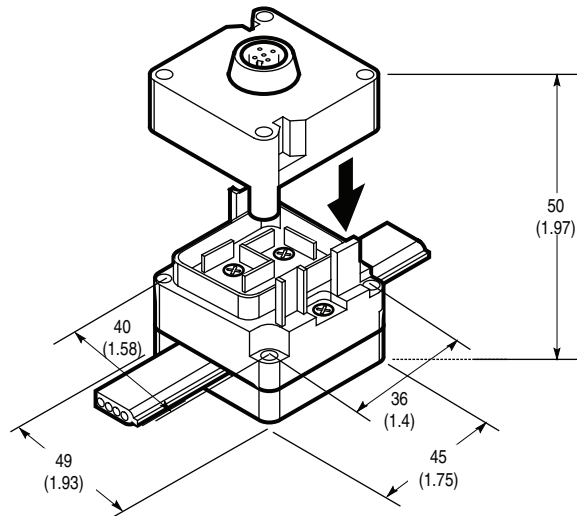
Terminator

Specifications

Storage Temperature [C (F)]	-40...+85 ° (-40...+185 °)
Operating Temperature [C (F)]	-25...+75 ° (-13...+167 °)
Enclosure Type Rating	Unsealed: NEMA 1; IP60 (IEC 529) Sealed: NEMA 6P, 13, IP67 and 1200 psi washdown
Vibration	1.5 mm displacement @ 10...500 Hz, 10 G peak, 3 planes
Material	Valox®
Dimensions	45 x 49 x 50 mm (1.8 x 1.8 x 2 in.)

Approximate Dimensions

Dimensions are in millimeters (inches). Illustrations are not drawn to scale.



KwikLink™ Heavy Duty Flat Media

Pigtail Drop—Insulation Displacement Connectors



Mini Style Pigtail Drop IDC



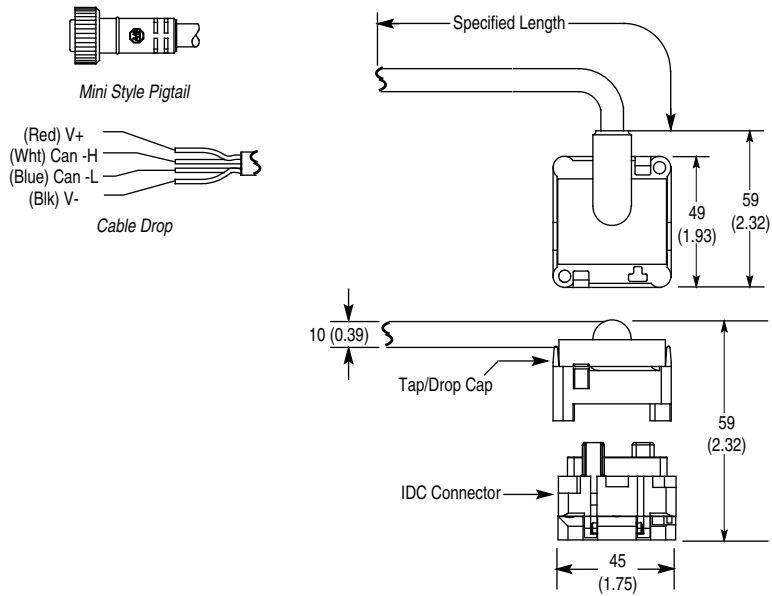
Cable Drop IDC

Specifications

Storage Temperature [C (F)]	-40...+85 ° (-40...+185 °)
Operating Temperature [C (F)]	-25...+75 ° (-13...+167 °)
Enclosure Type Rating	Sealed: NEMA 6P, 13; IP67 (IEC 529) and 1200 psi (8270 kPa) washdown Sealed: NEMA 6P, 13; IP67 (IEC 529) and 1200 psi (8270 kPa) washdown
Vibration	1.5 mm displacement @ 10...500 Hz, 10 G peak, 3 planes
Material	Valox®
Dimensions	45 x 49 x 59 mm (1.8 x 1.8 x 2.3 in.)

Approximate Dimensions

Dimensions are in millimeters (inches). Illustrations are not drawn to scale.





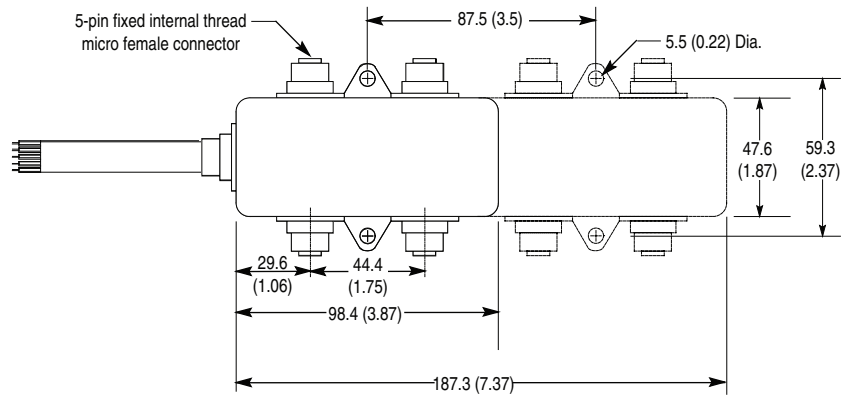
4- and 8-Port DevicePorts with Cable Drop

Specifications

Storage Temperature [C (F)]	-40...+85 ° (-40...+185 °)
Operating Temperature [C (F)]	-25...+70 ° (-13...+158 °)
Enclosure Type Rating	NEMA 4, 6P and 1200 psi (8270 kPa), 3.5 GPM, (60°C) 140°F temperature washdown; IP67 (IEC 529)
Vibration	30...120 Hz
Shock	5 g
Material	Chemical resistant black polymer

Approximate Dimensions

Dimensions are in millimeters (inches). Illustrations are not drawn to scale.



KwikLink™ Heavy Duty Flat Media Drop Cable



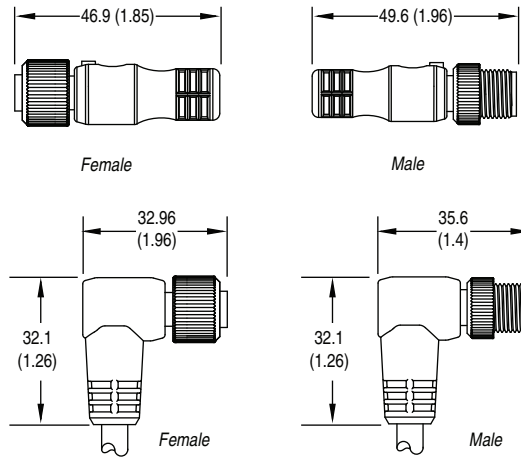
KwikLink Drop Cable

Specifications

Coupling Nut Material	Epoxy-coated zinc
Connector Material	Molded oil-resistant PUR
Contact Material	Gold over nickel-plated brass
Cable Type	Oil-resistant grey PVC jacket, unshielded, 22 AWG power conductors, 24 AWG signal conductors
Cable O.D.	6 mm (0.24 in.)
Temperature Rating [C (F)]	-20...+80 ° (-4...+176 °)
Current, Max	3 A

Approximate Dimensions

Dimensions are in millimeters (inches). Illustrations are not drawn to scale.





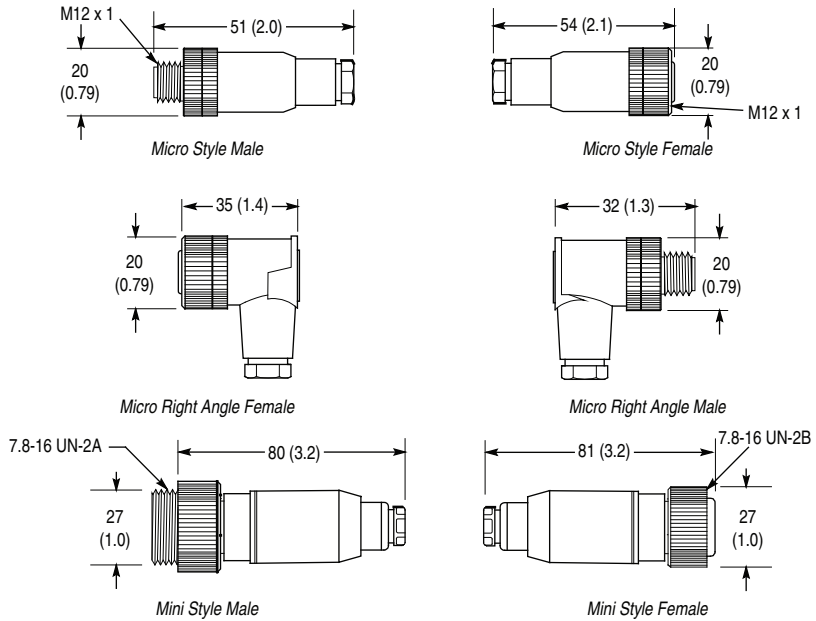
Straight Female Micro Style Terminal Chamber

Specifications

Coupling Nut Material	Micro: Nickel-plated brass; Mini: Anodized aluminum
Connector Shell Material	Nylon
Contact Material	Gold-plated palladium/nickel
Enclosure Type Rating	NEMA 6; IP67 (IEC 529)
Operating Temperature [C (F)]	-40...+90 ° (-40...+194 °)

Approximate Dimensions

Dimensions are in millimeters (inches). Illustrations are not drawn to scale.



KwikLink™ Heavy Duty Flat Media

Micro Auxiliary Power Cordsets & Patchcords



4-Pin DC Micro Patchcord

Specifications

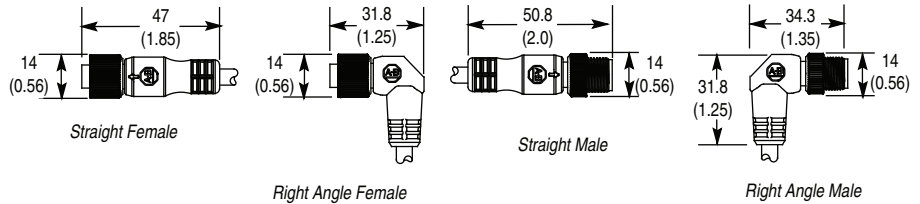
Certifications	UL Recognized and CSA Certified
Mechanical	
Coupling Nut Material	Epoxy-coated zinc
Connector Material	Molded PUR
Contact Material	Gold over nickel-plated brass
Cable Type	Oil-resistant PVC jacket, PVC insulated conductors, 300V
Cable Diameter [mm (in.)]	5 (0.21)
Bend Radius	10 x diameter
Electrical	
Cable Rating	UL AWM style 2661 VW-1 105C 300V, CSA AWM A/B I/II 80C 300V FT1, UV oil and water resistant
Assembly Rating	250V, 4 A
Environmental	
Enclosure Type Rating	IP67, NEMA 6P, 1200 psi (8270 kPa) washdown
Temperature Rating [C (F)]	-20...+105 ° (-4...+221 °)

Wiring Diagrams

Male	Female
1 <--No connection--<	1
2 <-----Brown-----<	2
3 <-----Blue-----<	3
4 <--No connection--<	4
5 <--No connection--<	5

Approximate Dimensions

Dimensions are in millimeters (inches). Illustrations are not drawn to scale.



KwikLink™ Heavy Duty Flat Media Auxiliary Power Insulation Displacement Connectors



Specifications

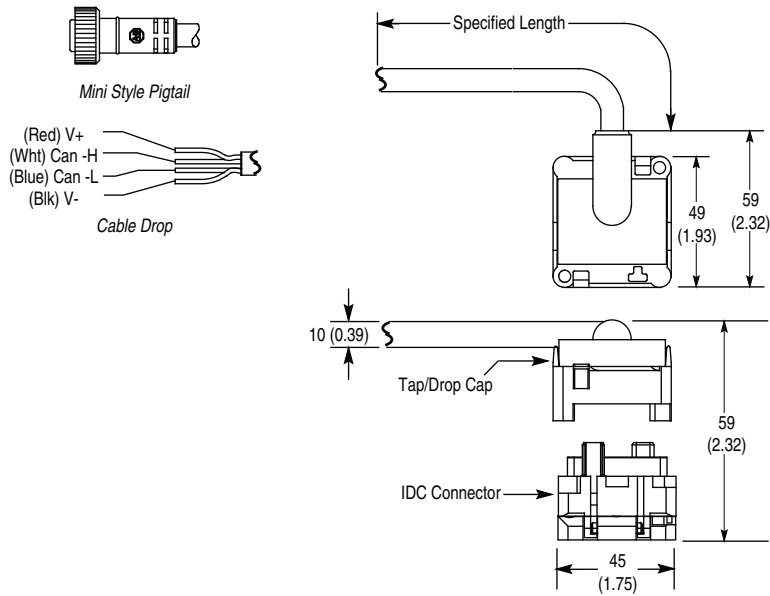
Cable Temperature [C (F)]	-25...+75 ° (-13...+167 °)
Enclosure Type Rating	NEMA 6P, 13; IP67 (IEC 529) and 1200 psi (8270 kPa) washdown
Vibration	1.5 mm displacement @ 10...500 Hz, 10 G peak, 3 planes
Material	Valox®
Cable Type	Oil resistant yellow PVC jacket, 16 AWG stranded copper, 600V, UL Recognized and CSA Certified, ST00W-A
Dimensions	45 x 49 x 59 mm (1.8 x 1.8 x 2.3 in.)

Wiring

Device End	Flat Cable
Black (pin 1)	Black
White (pin 2)	Blue
Red (pin 3)	Red
Green (pin 4)	White

Approximate Dimensions

Dimensions are in millimeters (inches). Illustrations are not drawn to scale.



Cordsets & Patchcords, Round Media Cable Spools

Thick Trunk Cable



Thick Trunk Cable



Mini to Mini Thick Patchcord

Specifications

Certifications	UL Recognized and CSA Certified
Mechanical	
Coupling Nut Material	Epoxy-coated zinc
Jacket Material	Grey PVC
No. of Conductors	1 pair 15 AWG, 1 pair 18 AWG, and drain
Contact Material	Gold-plated machined brass
Cable Diameter [mm (in.)]	Thick: 12.2 (0.48); ODVA Type V: 13.5 (0.53)
Bend Radius	10 x diameter
Electrical	
Cable Rating	Thick: UL-Type PLTC 300V or CM 75 °C (167 °F) or AWM style 2464, CSA-AWM I/II A/B 80 °C (176 °F) 300V FT1, Class 2 Type Thick Flex Rated: UL-Type PLTC 75C or AWM 80C 600V, CSA AWM I/II A/B 80C 600V, FT4 Oil Res II ODVA Type V, Open-Wiring Compliant: UL 600V TC-ER 75C Sunlight Resistant, c(UL) AWM I/II A/B 75C 600V FT1 ODVA Type V Cable: Type V Trunk Cable, UL 600V Type TC-ER Sunlight Resistant 75 °C Dry Open Wiring, CSA AWM I/II A/B 75 °C 600V FT1, Oil Resistant, Class 1 Type
Assembly Rating	Thick: 300V, 8 A (4A NEC)
Environmental	
Enclosure Type Rating	NEMA 1, 2, 3, 4, 6P, 12, 13; IP67; 1200 psi (8720 kPa) washdown
Cable Temperature [C (F)]	-20...+70 ° (-15...+158 °)

Approximate Dimensions

Dimensions are in millimeters (inches). Illustrations are not drawn to scale.

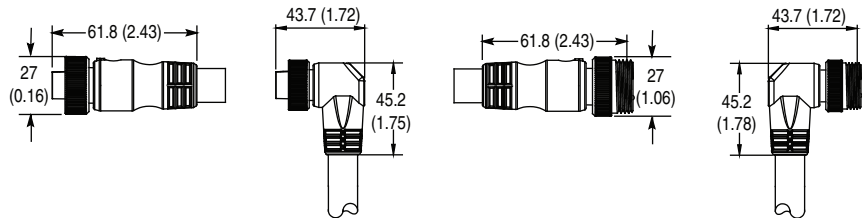
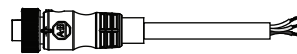


Figure A
Straight Female

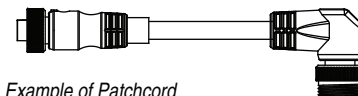
Figure B
Right Angle Female

Figure C
Straight Male

Figure D
Right Angle Male



Example of Cordset



Example of Patchcord

Pinout and Color Code

Face View Pinout	
Mini Connector	
Female	Male
Color Code	1 Drain 2 Red (V+) 3 Black (V-) 4 White (CAN_H) 5 Blue (CAN_L)

Cordsets & Patchcords, Round Media Cable Spools

Thin Trunk Cable



Thin Cable



Mini to Mini Thin Cordset

Specifications

Certifications	UL Recognized and CSA Certified
Mechanical	
Coupling Nut Material	Epoxy-coated zinc
Jacket Material	Yellow CPE (chemical resistant) or grey PVC
No. of Conductors	1 pair 22 AWG, 1 pair 24 AWG and drain
Contact Material	Mini: Gold-plated machined brass; Micro: Gold over nickel-plated brass
Cable Diameter [mm (in.)]	6.9 (0.27)
Bend Radius	10 x diameter
Current, Max	4 A
Electrical	
Cable Rating	Grey PVC: UL CL2 or CMG 75 °C (167 °F) or AWM 600V or c(UL) CMG or AWM I/II 80 °C (176 °F) 300V FT4; Grey High-Flex PVC: UL CL2 75 °C (167 °F) or AWM 20201 80 °C (176 °F) 600V or CSA AWM I/II 80 °C (176 °F) 600V FT4; Yellow CPE: UL- CL2 or CM 75 °C (167 °F) or AWM 20869 80 °C (176 °F), CSA- AWM I/II A/B 80 °C (176 °F) 300V FT4 Oil Res II
Assembly Rating	250V, 4 A
Environmental	
Enclosure Type Rating	NEMA 1, 2, 3, 4, 6P, 12, 13; IP67; 1200 psi (8720 kPa) washdown
Cable Temperature [C (F)]	-20...+70 ° (-15...+158 °)

Approximate Dimensions

Dimensions are in millimeters (inches). Illustrations are not drawn to scale.

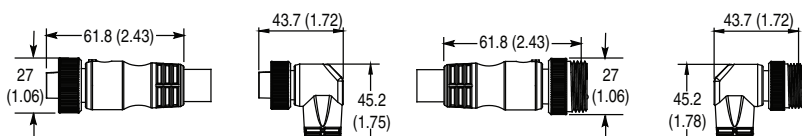


Figure A
Straight Female

Figure B
Right Angle Female

Figure C
Straight Male

Figure D
Right Angle Male

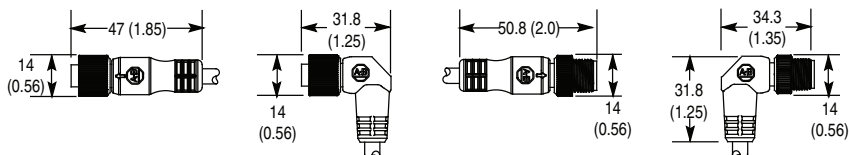


Figure E
Straight Female

Figure F
Right Angle Female

Figure G
Straight Male

Figure H
Right Angle Male

Pinout and Color Code

		Face View Pinout			
		Mini Connector		Micro Connector	
		Female	Male	Female	Male
Color Code				1 Drain	4 White (CAN_H)
				2 Red (V+)	5 Blue (CAN_L)
				3 Black (V-)	

Receptacles, Round Media

Thick and Thin Cable



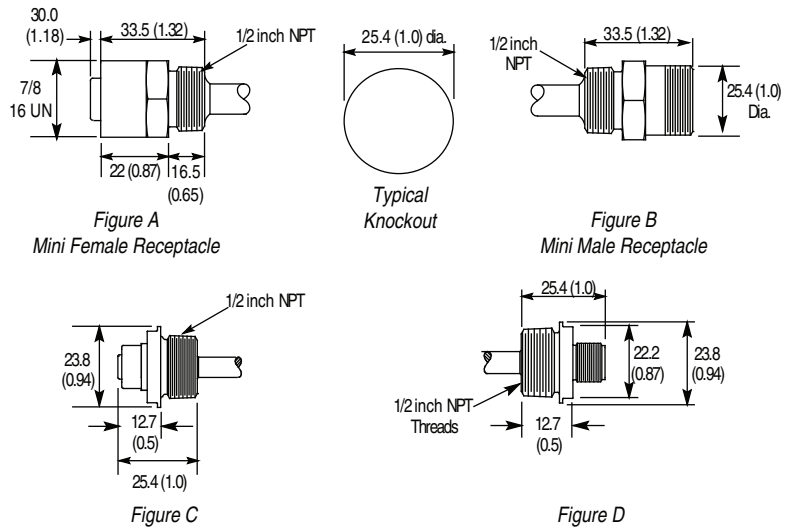
Mini Female Thin Receptacle

Specifications

Certifications	UL Recognized and CSA Certified
Mechanical	
Material	Thick: Grey PVC; Thin: Grey PVC or Yellow CPE
Jacket Material	Thick: Grey PVC; Thin: Grey PVC or Yellow CPE
No. of Conductors	Thick: 1 pair 15 AWG, 1 pair 18 AWG, and drain; Thin: 1 pair 22 AWG, 1 pair 24 AWG, and drain
Contact Material	Mini: Gold-plated machined brass; Micro: Gold over nickel-plated brass
Cable Diameter [mm (in.)]	Thick: 11.2 (0.44); Thin: 6.9 (0.27)
Bend Radius	10 x diameter
Current, Max	Thick: 8 A (4A NEC); Thin: 3 A
Electrical	
Cable Rating	Thick: UL-Type PLTC 300V or CM 75 °C (167 °F) or AWM style 2464, CSA-AWM I/II A/B 80 °C (176 °F) 300V FT1; Thin, Grey PVC: UL- CM 75 °C (167 °F) or AWM 2464, CSA- SWM II A/B 80 °C (176 °F) 300V FT4; Thin, Yellow CPE: UL- CL2 or CM 75 °C (167 °F) or AWM 20869 80 °C (176 °F), CSA- AWM I/II A/B 80 °C (176 °F) 30
Assembly Rating	Thick: 300V, 9 A (4 A NEC); Thin: (250V, 4 A
Environmental	
Enclosure Type Rating	NEMA 1, 2, 3, 4, 6P, 12, 13; IP67, 1200 psi (8720 kPa) washdown
Operating Temperature [C (F)]	-40...+80 ° (-40...+176 °)

Approximate Dimensions

Dimensions are in millimeters (inches). Illustrations are not drawn to scale.



Pinout and Color Code

Face View Pinout			
Mini Connector		Micro Connector	
Female	Male	Female	Male
		1 Drain	
		2 Red (V+)	
		3 Black (V-)	
		4 White (CAN_H)	
		5 Blue (CAN_L)	



Straight Female Micro Style



Female Mini Style

Specifications

Mechanical	
Coupling Nut Material	Micro: nickel-plated brass; Mini: anodized aluminum
Connector Shell Material	Nylon
Contact Material	Mini: Gold-plated brass; Micro: Gold over nickel-plated brass
Shock	5 g
Vibration	30...120 Hz
Electrical	
Assembly Rating	Mini: 250V, 9 A; Micro: 125V, 4 A
Environmental	
Enclosure Type Rating	NEMA 6; IP67 (IEC 529)
Operating Temperature [C (F)]	-25...+70 ° (-13...+158 °)

Approximate Dimensions

Dimensions are in millimeters (inches). Illustrations are not drawn to scale.

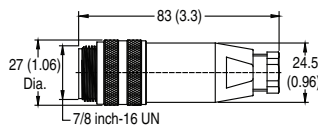


Figure A
Mini Style Female

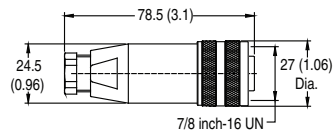


Figure B
Mini Style Male

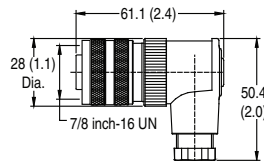


Figure C
Micro Style Female

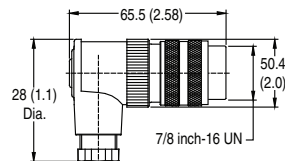


Figure D
Micro Style Male

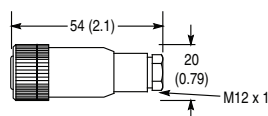


Figure E
Micro Style Female

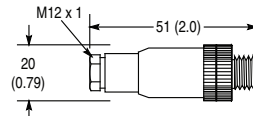


Figure F
Micro Style Male

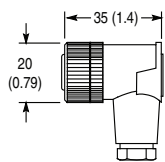


Figure G
Micro Right Angle Female

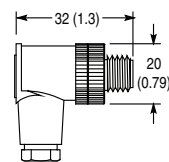


Figure H
Micro Right Angle Male

Pinout and Color Code

		Face View Pinout			
		Mini Connector		Micro Connector	
		Female	Male	Female	Male
Color Code				1 Drain	4 White (CAN_H)
				2 Red (V+)	5 Blue (CAN_L)
				3 Black (V-)	

Bulkhead Pass-thru, Round Media



Mini Bulkhead Pass-thru



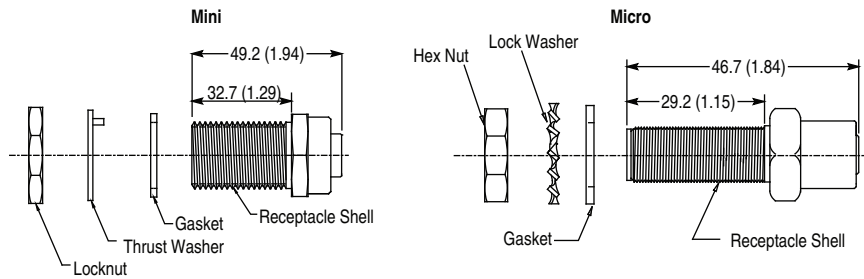
Micro Bulkhead Pass-thru

Specifications

	Mini	Micro
Mechanical		
Material	Nickel-plated brass	
Connector Insert Material	PVC	Nylon
Gasket Material	Neoprene	
Thrust Washer	Nylon	Steel alloy
Contact Material	Gold-plated palladium nickel	
Electrical		
Assembly Rating	600V, 8 A	250V, 4 A
Environmental		
Enclosure Type Rating	IP67	
Operating Temperature [C (F)]	-20...+105 ° (-4...+221 °)	-20...+80 ° (-4...+176 °)

Approximate Dimensions

Dimensions are in millimeters (inches). Illustrations are not drawn to scale.





Mini Style Terminator



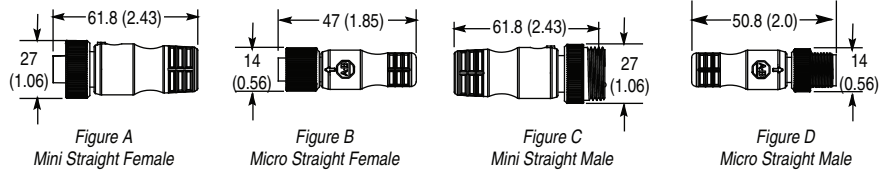
Micro Style Terminator

Specifications

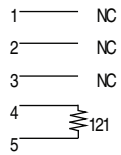
Mechanical	
Coupling Nut Material	Epoxy-coated zinc
Contact Material	Mini: Gold-plated brass; Micro: Gold over nickel-plated brass
Electrical	
Assembly Rating	Mini: 250V, 8 A; Micro: 250V, 4 A
Environmental	
Enclosure Type Rating	NEMA 1, 2, 3, 4, 6P; 12, 13, IP67, 1200 psi (8720 kPa) washdown
Operating Temperature [C (F)]	-25...+70 ° (-13...+158 °)

Approximate Dimensions

Dimensions are in millimeters (inches). Illustrations are not drawn to scale.



Wiring Diagrams



T-port, Round Media

Mini



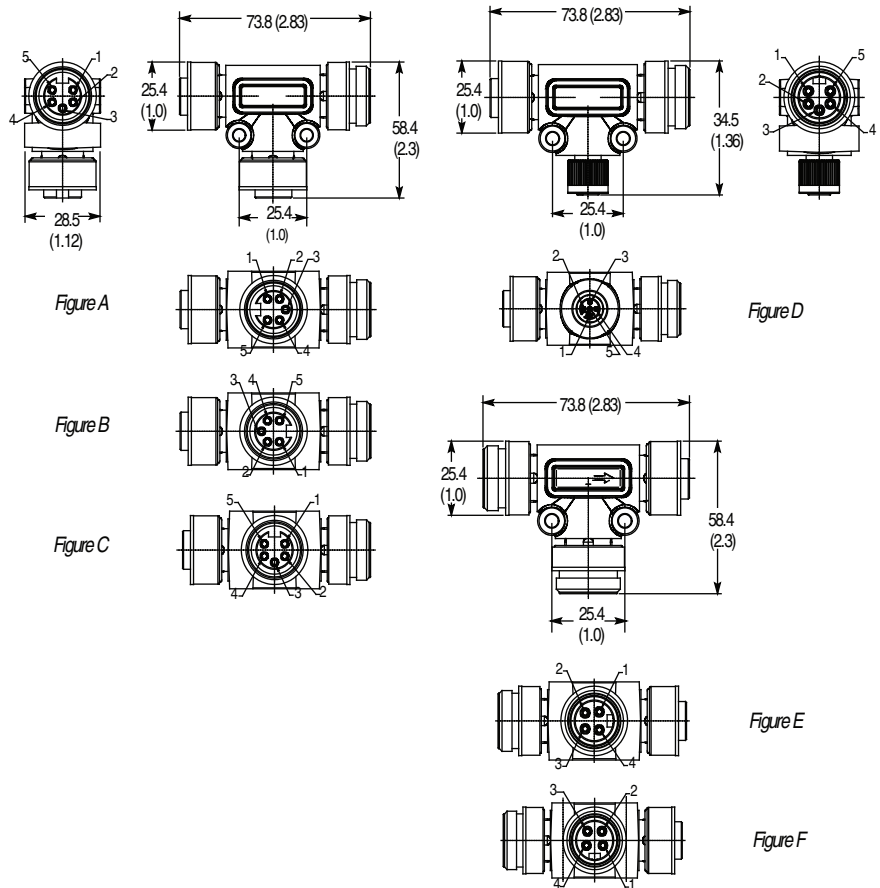
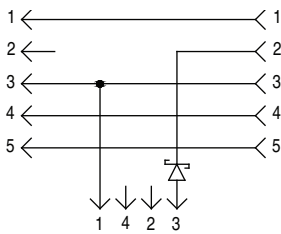
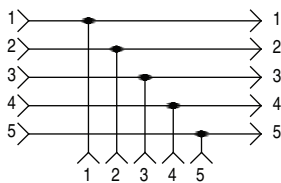
Mini Style T-Port

Specifications

Mechanical	
Coupling Nut Material	Epoxy-coated zinc
Material	TPE
Contact Material	Mini: Gold-plated brass; Micro: Gold-plated palladium nickel
Electrical	
Assembly Rating	Mini to Mini: 50V, 8 A; Mini to Micro: 50V, 4 A
Environmental	
Enclosure Type Rating	NEMA 6P, 12 and 13; IP67, 1200 psi (8270 kPa) washdown
Operating Temperature [C (F)]	-25...+70 ° (-13...+158 °)

Approximate Dimensions

Dimensions are in millimeters (inches). Illustrations are not drawn to scale.



Pinout and Color Code

	Face View Pinout			
	Mini Connector	Mini Connector	Micro Connector	Mini Connector
	Female	Male	Female	Male
Color Code	1 Drain 4 White (CAN_H) 2 Red (V+) 5 Blue (CAN_L) 3 Black (V-)			



Micro Style T-Port

Specifications

Mechanical	
Coupling Nut Material	Epoxy-coated zinc
Material	PUR
Contact Material	Gold over nickel-plated brass
Electrical	
Assembly Rating	250V, 4 A
Environmental	
Enclosure Type Rating	NEMA 6P, 12 and 13, IP 67 (IEC 529), 1200 psi (8270 kPa) washdown
Operating Temperature [C (F)]	-20...+70 ° (-4...+158 °)

Approximate Dimensions

Dimensions are in millimeters (inches). Illustrations are not drawn to scale.

Wiring Diagrams

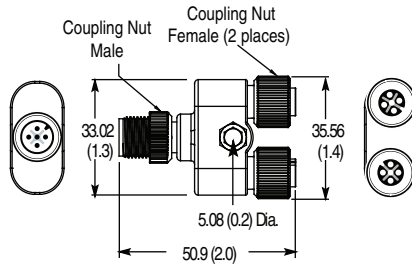
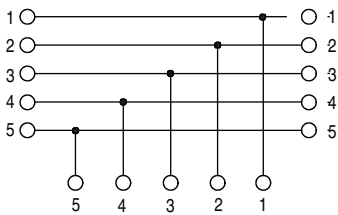


Figure A

Pinout and Color Code

Face View Pinout	
Micro Connector	
Female	Male
1 Drain	4 White (CAN_H)
2 Red (V+)	5 Blue (CAN_L)
	3 Black (V-)

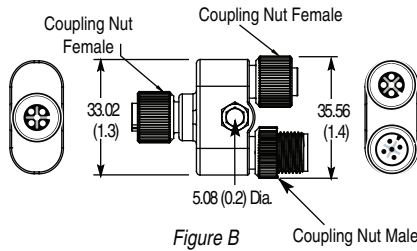


Figure B

Gender and Configurator Changers, Round Media



Male to Male Gender Changer



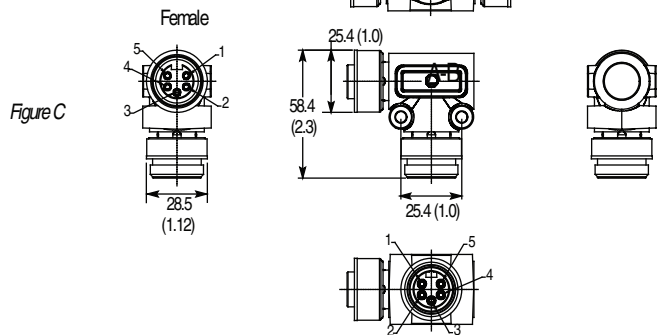
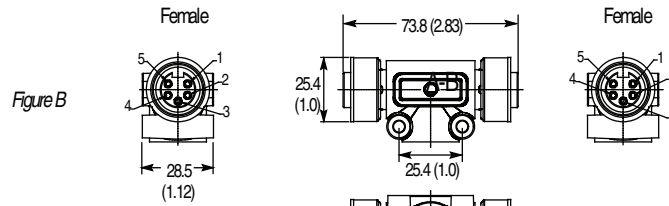
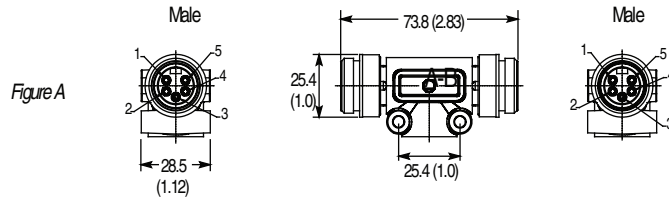
Right Angle Adaptor

Specifications

Mechanical	
Coupling Nut Material	Epoxy-coated zinc
Material	TPE
Contact Material	Gold-plated palladium nickel
Electrical	
Assembly Rating	50V, 8 A
Environmental	
Enclosure Type Rating	NEMA 6P, 12 and 13, IP67, 1200 psi (8270 kPa) washdown
Operating Temperature [C (F)]	-20...+70 ° (-4...+158 °)

Approximate Dimensions

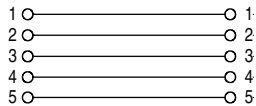
Dimensions are in millimeters (inches). Illustrations are not drawn to scale.



Pinout and Color Code

Face View Pinout	
Mini Connector	
Female	Male
1 Drain 2 Red (V+) 3 Black (V-)	4 White (CAN_H) 5 Blue (CAN_L)

Wiring Diagrams





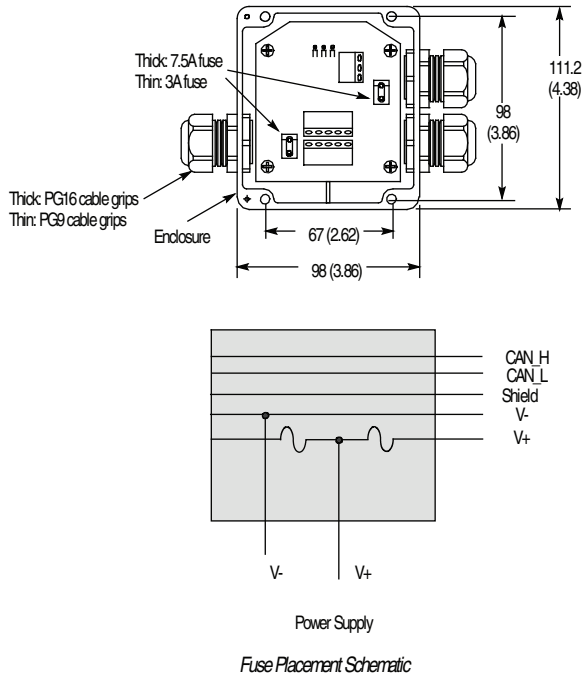
PowerTap, Thick Cable

Specifications

Certifications	UL Recognized and CSA Certified
Mechanical	
Material	Black polymer
Relative Humidity	5...95% (noncondensing)
Current, Max	Thick: 15.0 A max. total current; (7.5 A max. per trunk) Thin: 6 A max. total current; (3 A max. per trunk)
Electrical	
Assembly Rating	Thick: 24V, 8 A; Thin: 25V, 3 A
Environmental	
Enclosure Type Rating	NEMA 3, 4X, 12 and 13; 1200 psi (8270 kPa) at 60°C (140°F); temperature washdown
Storage Temperature [C (F)]	-40...+85 ° (-40...+185 °)
Operating Temperature [C (F)]	-25...+70 ° (-13...+158 °)

Approximate Dimensions

Dimensions are in millimeters (inches). Illustrations are not drawn to scale.



DeviceBox™, Round Media

2-, 4-, 8-Port



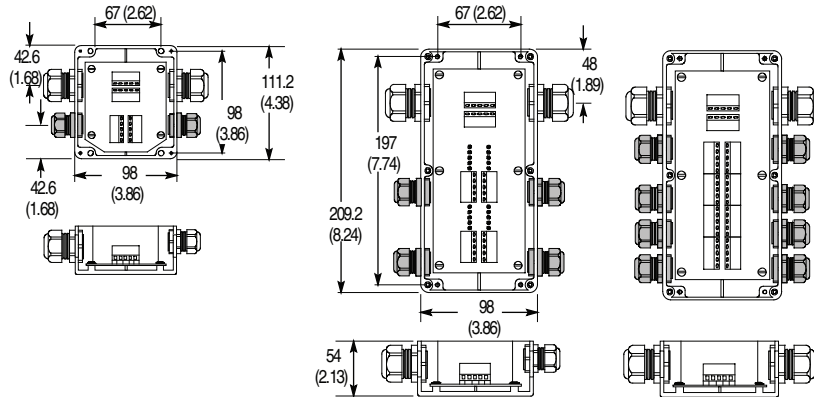
4-port DeviceBox, Thick Cable

Specifications

Certifications	UL Recognized and CSA Certified
Mechanical	
Material	Black polymer
Relative Humidity	5...95% (noncondensing)
Current, Max	Thick: 8 A max. total current; (7.5 A max. per trunk) Thin:
Electrical	
Assembly Rating	24V, 8 A
Environmental	
Enclosure Type Rating	NEMA 3, 4X, 12 and 13; 1200 psi (8270 kPa) washdown
Storage Temperature [C (F)]	-40...+85 ° (-40...+185 °)
Operating Temperature [C (F)]	-25...+70 ° (-13...+158 °)

Approximate Dimensions

Dimensions are in millimeters (inches). Illustrations are not drawn to scale.



Note: Trunk connection in diagrams above show thick cable gland.



6-Port Thru-Trunk DevicePort with Micro Connectors

Specifications

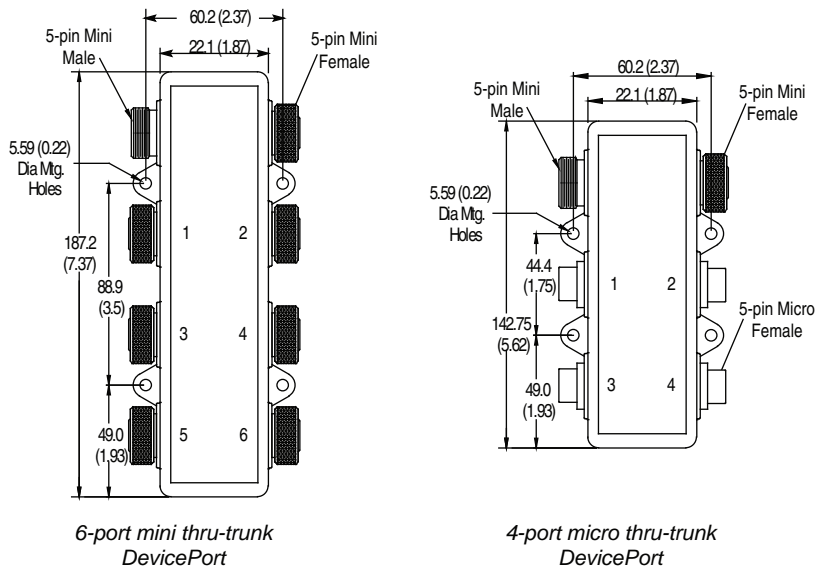
Certifications	UL Recognized and CSA Certified
Mechanical	
Material	Chemical resistant black polymer
Connector Shell Material	Anodized aluminum with clear sealant
Contact Material	Mini: Gold-plated brass; Micro: Gold over nickel-plated brass
Shock	5 g
Vibration	30...120 Hz
Electrical	
Assembly Rating	24V, 3 A
Environmental	
Enclosure Type Rating	IP67, NEMA 4, 6P; 1200 psi (8270 kPa) washdown
Operating Temperature [C (F)]	-13...+158 ° (-25...+70 °)

Pinout and Color Code

Face View Pinout		
Mini Connector		Micro Connector
Female	Male	Female
1 Drain	4 White (CAN_H)	
2 Red (V+)	5 Blue (CAN_L)	
	3 Black (V-)	
Color Code		

Approximate Dimensions

Dimensions are in millimeters (inches). Illustrations are not drawn to scale.



DevicePort™, Round Media Drop-Connected



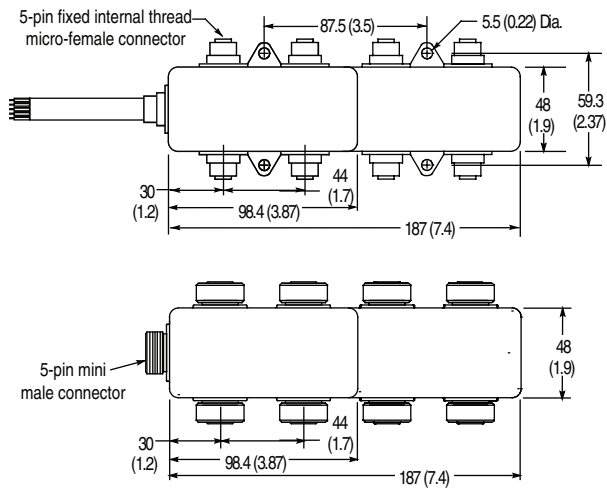
8-Port DevicePort with Cable Drop and Micro Connectors

Specifications

Certifications	UL Recognized and CSA Certified
Mechanical	
Material	Chemical resistant black polymer
Connector Shell Material	Anodized aluminum with clear sealant
Contact Material	Mini: Gold-plated brass; Micro: Gold over nickel-plated brass
Shock	5 g
Vibration	30...120 Hz
Electrical	
Assembly Rating	24V, 3 A
Environmental	
Enclosure Type Rating	IP67, NEMA 4, 6P; 1200 psi (8270 kPa) washdown
Operating Temperature [C (F)]	-13...+158 ° (-25...+70 °)

Approximate Dimensions

Dimensions are in millimeters (inches). Illustrations are not drawn to scale.



Pinout and Color Code

Face View Pinout			
Mini Connector		Micro Connector	
Female	Male	Female	Male
		1 Drain	
		2 Red (V+)	
		3 Black (V-)	
		4 White (CAN_H)	
		5 Blue (CAN_L)	

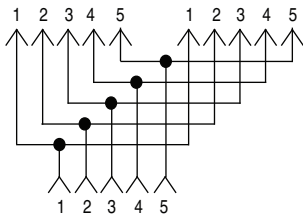


Open-Style Y-Adaptor

Specifications

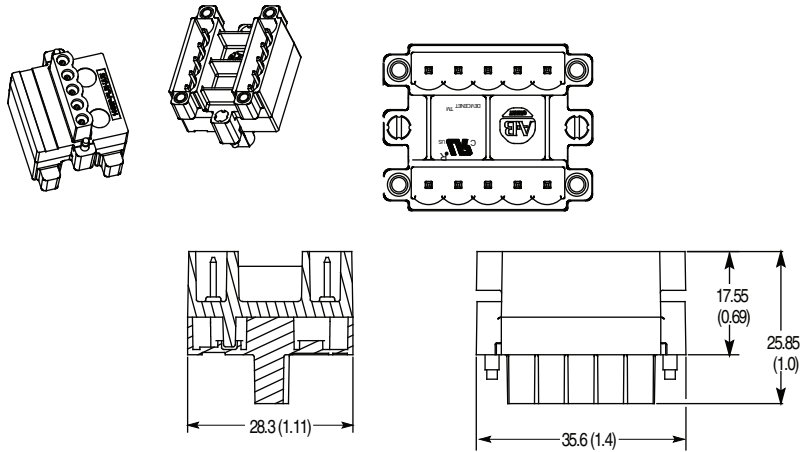
Certifications	UL Recognized for US and Canada
Mechanical	
Material	Nylon
Screw Material	Nickel-plated brass
Contact Material	Phosphor-bronze
Electrical	
Cable Rating	—
Assembly Rating	24V, 8 A
Environmental	
Enclosure Type Rating	IP20
Operating Temperature [C (F)]	-25...+75° (-13...+167°)

Wiring Diagrams



Approximate Dimensions

Dimensions are in millimeters (inches). Illustrations are not drawn to scale.



Cordsets, Round Media

Open-Style

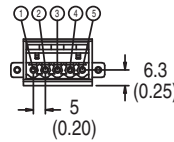


Specifications

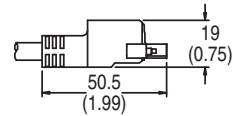
Safety Ratings	
Certifications	UL Recognized and CSA Certified
Physical Characteristics	
Housing Material	Nickel-plated brass
Jacket Material	Thin Grey PVC
Conductor Size, Max.	2 PR 22 AWG, 2 PR 24 AWG
Contact Material	Gold over nickel-plated brass
Cable Diameter	6.9 (0.27)
Home Run Connection	10 x diameter
Current, Max	4 A
Electrical	
Cable Rating	UL-CM 75 °C (167 °F) or AWM 2464, CSA-SWM II A/B 80 °C (176 °F) 300V FT4
Assembly Rating	250V, 4 A
Environmental	
Enclosure Type Rating	IP67, 1200 psi (8720 kPa) washdown
Operating Temperature [C (F)]	-20...+70 ° (-15...+158 °)

Approximate Dimensions

Dimensions are in millimeters (inches). Illustrations are not drawn to scale.



Drawing 1



Drawing 2

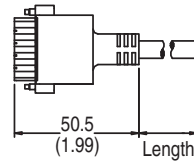


Figure A

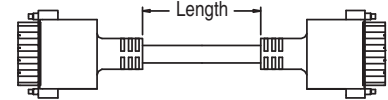


Figure B

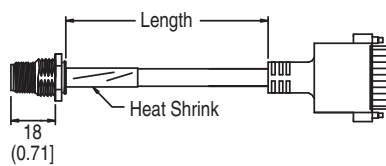


Figure C

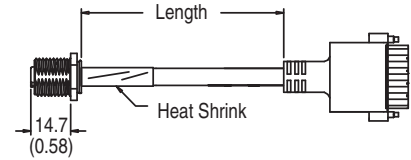
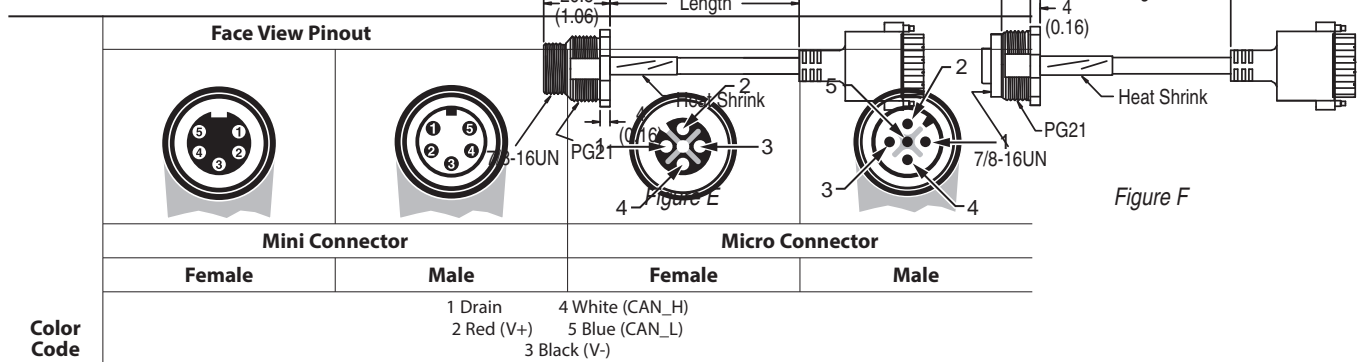


Figure D

Pinout and Color Code

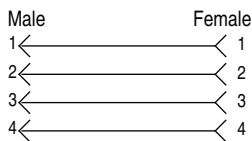




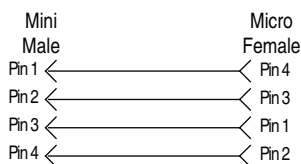
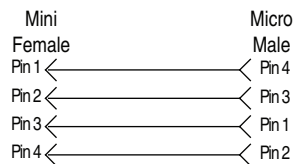
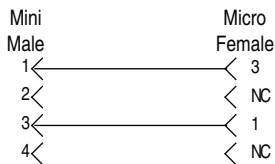
Mini to Mini Auxiliary Power Patchcord

Wiring Diagrams

Mini to Mini and Micro to Micro Patchcords



Mini to Micro Patchcords

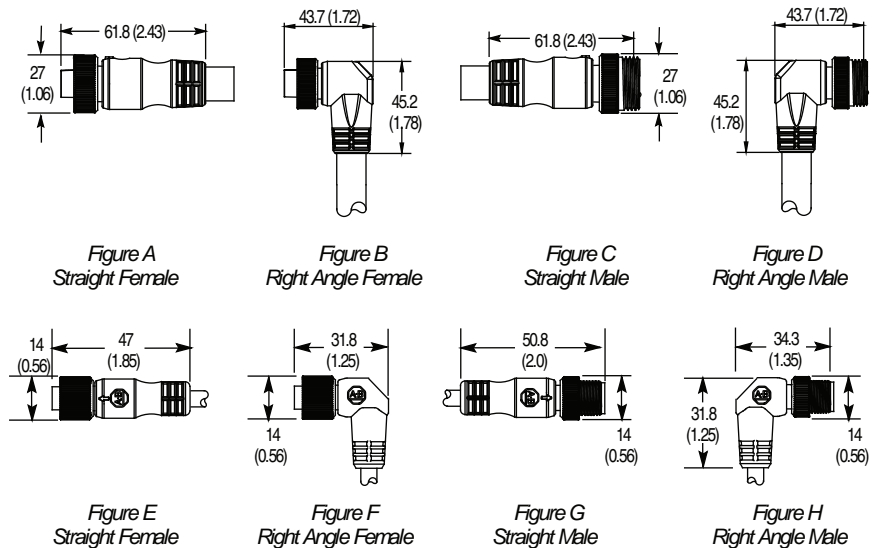


Specifications

Certifications	UL Recognized and CSA Certified
Mechanical	
Coupling Nut Material	Epoxy-coated zinc
Connector Material	Molded oil-resistant PUR (Micro), TPE (Mini)
Contact Material	Gold over nickel-plated brass
Cable Type	Oil-resistant yellow PVC jacket, UL Recognized and CSA Certified, 16 AWG cable: 600V, 18 AWG and 22 AWG cable: 300V
Bend Radius	10 x diameter
Cable Diameter [mm (in.)]	16 AWG: 11 (0.42), 18 AWG: 7.4 (0.29), 22 AWG: 5 (0.21)
Electrical	
Cable Rating	16 AWG: UL STOOW VW-1 105C 600V, CSA ST 105C 600V FT2, UV oil and water resistant; 18 AWG, 22 AWG: UL AWM style 2661 VW-1 105C 300V, CSA AWM A/B I/II 80C 300V FT1, UV oil and water resistant
Assembly Rating	Mini 16 AWG: 600V 10 A; Mini or micro 18 AWG or 22 AWG: 250V, 4 A
Environmental	
Enclosure Type Rating	IP67; NEMA 6P 1200 psi (8720 kPa) washdown
Temperature Rating [C (F)]	-20...+105 ° (-4...+221 °)

Approximate Dimensions

Dimensions are in millimeters (inches). Illustrations are not drawn to scale.



Pinout and Color Code

Color Code	Face View Pinout			
	Mini Connector		Micro Connector	
	Female	Male	Female	Male
16 AWG Cable	1 Black 2 White	3 Red 4 Green	—	
18 AWG Cable	1 Black 2 Blue	3 Brown 4 White	1 Brown 2 White 3 Blue	4 Black 5 Not used

Note: Pinout diagram for end device connector may differ, see page 6-55.

Cordsets & Patchcords, Auxiliary Power

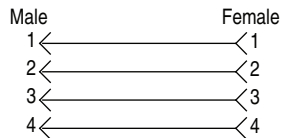
Flex-rated



Mini to Mini Auxiliary Power Patchcord

Wiring Diagrams

Mini to Mini and Micro to Micro Patchcord

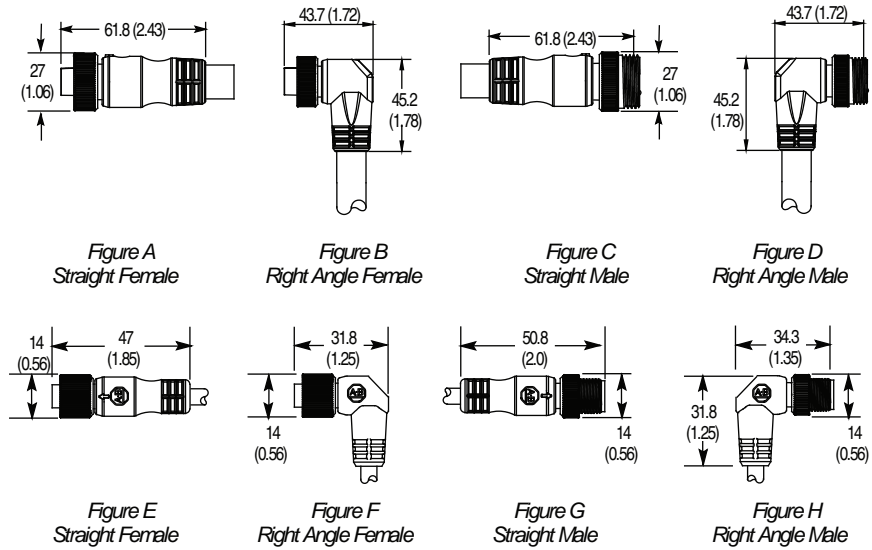


Specifications

Certifications	UL Recognized and CSA Certified
Mechanical	
Coupling Nut Material	Epoxy-coated zinc
Connector Material	Molded oil-resistant PUR (Micro), TPE (Mini)
Contact Material	Gold over nickel-plated brass
Cable Type	Oil-resistant yellow PVC jacket, UL Recognized and CSA Certified, 16 AWG cable: 600V, 18 AWG and 22 AWG cable: 300V
Bend Radius	10 x diameter
Cable Diameter [mm (in.)]	16 AWG: 11 (0.42), 18 AWG: 7.4 (0.29), 22 AWG: 5 (0.21)
Electrical	
Cable Rating	16 AWG: UL STOOW VW-1 105C 600V, CSA ST 105C 600V FT2, UV oil and water resistant; 18 AWG, 22 AWG: UL AWM style 2661 VW-1 105C 300V, CSA AWM A/B I/II 80C 300V FT1, UV oil and water resistant
Assembly Rating	Mini 16 AWG: 600V 10 A; Mini or micro 18 AWG or 22 AWG: 250V, 4 A
Environmental	
Enclosure Type Rating	IP67; NEMA 6P 1200 psi (8720 kPa) washdown
Temperature Rating [C (F)]	-20...+105 ° (-4...+221 °)

Approximate Dimensions

Dimensions are in millimeters (inches). Illustrations are not drawn to scale.



Pinout and Color Code

Color Code	Face View Pinout			
	Mini Connector		Micro Connector	
	Male	Female	Male	Female
16 AWG Cable	1 Black 2 White	3 Red 4 Green	—	
18 AWG Cable	1 Black 2 Blue	3 Brown 4 White	1 Brown 2 White 3 Blue	4 Black 5 Not used

Note: Pinout diagram for end device connector may differ, see page 6-54.



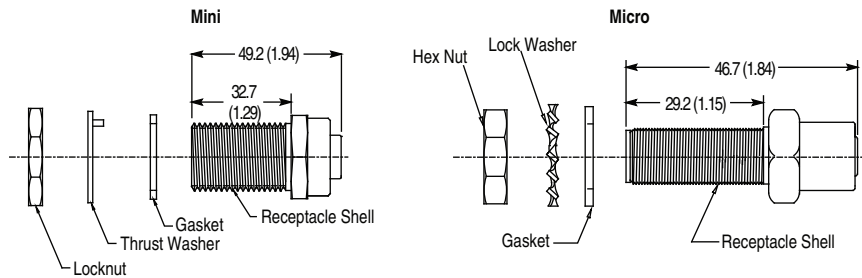
Power Bulkhead Pass-thru

Specifications

	Mini	Micro
Mechanical		
Shell and Lockout Material	Nickel-plated brass	
Connector Insert Material	PVC	Nylon
Gasket Material	Neoprene	
Thrust Washer	Nylon	Steel Alloy
Contact Material	Gold-plated palladium/nickel	
Electrical		
Assembly Rating	600V, 8 A	250V, 4 A
Environmental		
Enclosure Type Rating	NEMA 4, 6P, 12, 13; IP67; 1200 psi washdown	
Operating Temperature [C (F)]	-20...+105 ° (-4...+221 °)	

Approximate Dimensions

Dimensions are in millimeters (inches). Illustrations are not drawn to scale.



Receptacles, Auxiliary Power



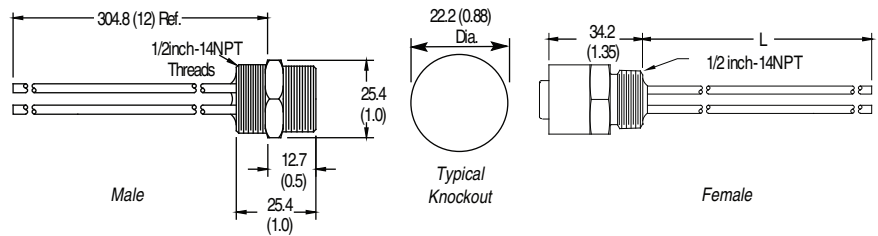
4-pin Female Receptacles

Specifications

Mechanical	
Receptacle Shell Material	Female: Aluminum with clear sealant Male: Die-cast zinc with clear sealant
Connector Insert Material	PVC
Contact Material	Gold over nickel-plated brass
Cable Type	Oil resistant PVC, 16 AWG stranded copper, 600V, UL Recognized and CSA Certified
Electrical	
Cable Rating	600V
Assembly Rating	600V, 10 A
Environmental	
Enclosure Type Rating	NEMA 6P; IP67; 1200 psi (8720 kPa) washdown
Cable Type	-30...+105 ° (-22...+221 °)

Approximate Dimensions

Dimensions are in millimeters (inches). Illustrations are not drawn to scale.



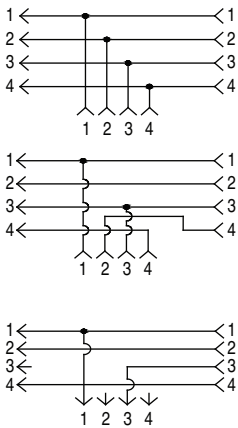


4-Pin Mini Style Power Trunk Tee

Specifications

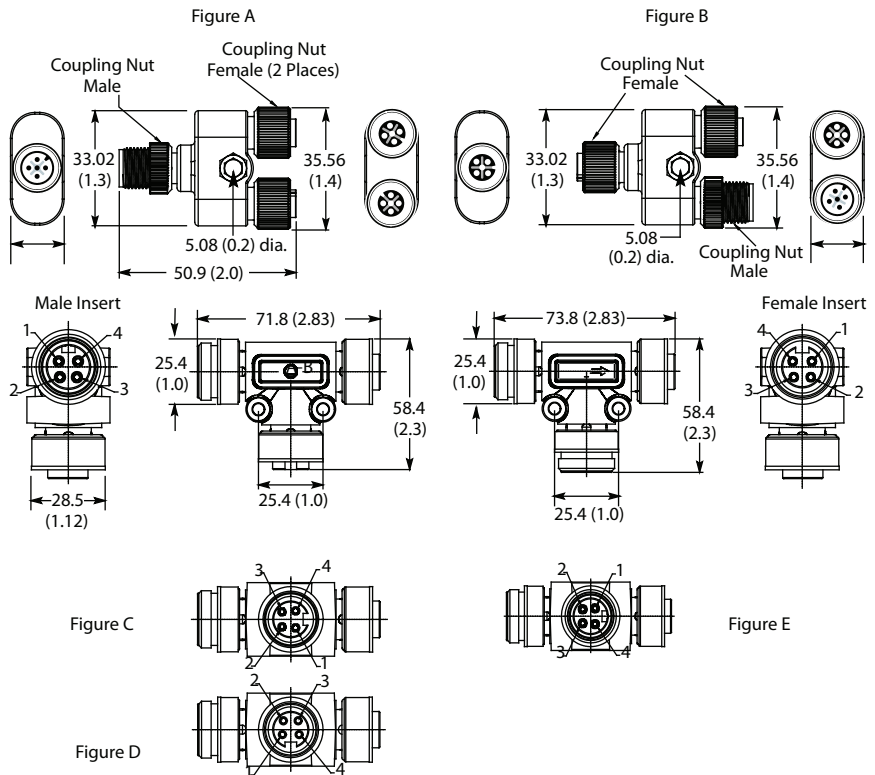
Mechanical	
Coupling Nut Material	Epoxy-coated zinc
Connector Material	PUR
Contact Material	Gold over nickel-plated brass
Electrical	
Assembly Rating	250V, 4 A
Environmental	
Enclosure Type Rating	NEMA 6P, 12 and 13, IP67 (IEC 529), 1200 psi (8270 kPa) washdown
Operating Temperature [C (F)]	-20...+70 ° (-4...+158 °)

Wiring Diagrams



Approximate Dimensions

Dimensions are in millimeters (inches). Illustrations are not drawn to scale.



Pinout and Color Code

Color Code	Face View Pinout			
	Mini Connector		Micro Connector	
Female				
Male				

Safety Shorting Plugs, Auxiliary Power

Single-Channel



Male Shorting Plug

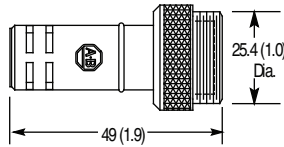
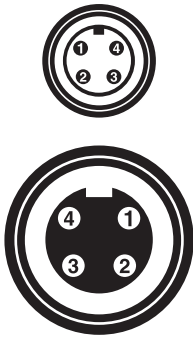
Specifications

Mechanical	
Coupling Nut Material	Epoxy-coated zinc
Material	Red Santoprene
Contact Material	Gold over nickel-plated brass
Electrical	
Assembly Rating	600V, 10 A
Environmental	
Enclosure Type Rating	NEMA 1, 2, 3, 4, 6P, 12, 13, IP 67, 1200 psi (8720 kPa) washdown
Operating Temperature [C (F)]	-25...+70 ° (-13...+158 °)

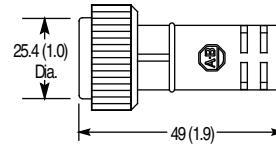
Approximate Dimensions

Dimensions are in millimeters (inches). Illustrations are not drawn to scale.

Pinout

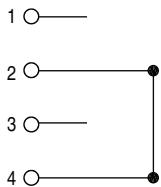


Male Mini Style Shorting Plug



Female Mini Style Shorting Plug

Wiring Diagrams



Rockwell Automation maintains current product environmental information on its website at <http://www.rockwellautomation.com/rockwellautomation/about-us/sustainability-ethics/product-environmental-compliance.page>

Allen-Bradley and Rockwell Automation are trademarks of Rockwell Automation, Inc. Trademarks not belonging to Rockwell Automation are property of their respective companies.

www.rockwellautomation.com

Power, Control and Information Solutions Headquarters

Americas: Rockwell Automation, 1201 South Second Street, Milwaukee, WI 53204-2496 USA, Tel: (1) 414.382.2000, Fax: (1) 414.382.4444
 Europe/Middle East/Africa: Rockwell Automation NV, Pegasus Park, De Kleetlaan 12a, 1831 Diegem, Belgium, Tel: (32) 2 663 0600, Fax: (32) 2 663 0640
 Asia Pacific: Rockwell Automation, Level 14, Core F, Cyberport 3, 100 Cyberport Road, Hong Kong, Tel: (852) 2887 4788, Fax: (852) 2508 1846